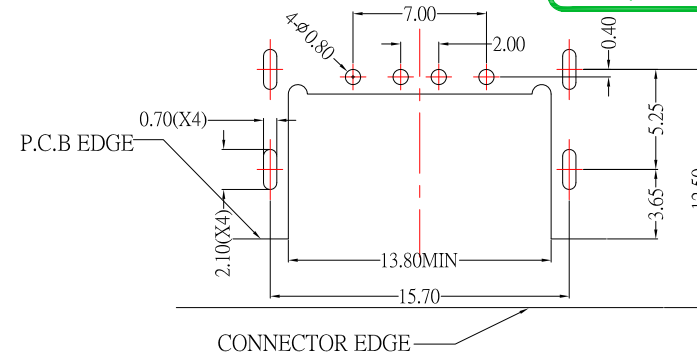


DATE CODE
YY:Year
MM:Month
DD:Day

SUA-110E29x-x-S236

Shell Material :
Blank : Brass
I : SPCC

Color :
White : W
Black : B



RECOMMEND P. C. B LAYOUT COMPONENT

SPECIFICATIONS

Electrical:

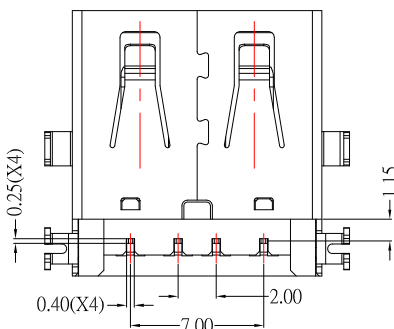
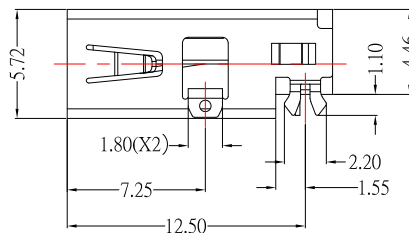
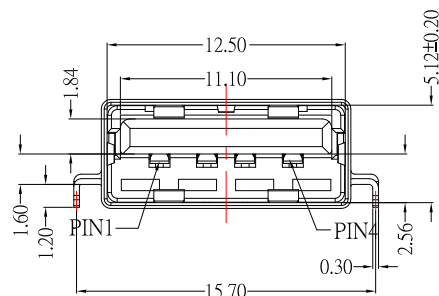
- 1.Voltage Current Rating: 1.8 A
- 2.Contact Resistance: 30 mΩ Max
- 3.Insulation Resistance: 100 MΩ Min
- 4.Dielectric Withstanding Voltage: 100 V AC

Material:

- 1.Housing: PBT
- 2.Contact: Copper Alloy
- 3.Shell: Brass / Spcc

Finish:

- 1.Contact: Plated Gold in Mating Area ;
Tin Plated on Solder Balls ;
Nickel under plated overall
- 2.Shell: Nickel under Plated surface layer



CONTACT 建倚科技股份有限公司
CONTACT TECHNOLOGY CORP.

TOLERANCE UNLESS OTHERWISE STATED :

Up to 5 ±0.2
Above 5 ~ 15 ±0.3
Above 15 ~ 30 ±0.4
Above 30 ~ 50 ±0.5
Angle ±0.3°

3RD. ANGEL'S



UNITS

MM

DRAWN BY: Jack Lu
CHECKED BY: Jacky Chen
APPROVED BY: Tony Kao

DATE: 12/03/20
DATE: 12/03/20
DATE: 12/03/20

MAT'L		TITLE	CONNECTOR
FINISH		MODLE	USB AF DIP 沉板反向 H4.46mm無捲邊
SCALE	1 : 1	DWG NO.	SUA-110E29x-x-S236
SHEET NO.	1 of 1	PART NO.	SUA-110E29x-x-S236
		SIZE	A4
		VER	R

ITEM NO.	DESCRIPTION	DRAWN	DATE